



Every Child Is Special!

# Start Your Own WORLD CLASS SCHOOL K12

a future's education, today!  
**Children Deserve**  
nothing less.

In the future, all children will **COMPETE WITH THEMSELVES.**  
In Global Schools, they already do.



CORPORATE BROCHURE

FRANCHISE

ACADEMICS

MANAGEMENT

LARGE SCALE PROJECTS

Based on  
**38-country experience**

Family know-how of running the **worlds largest school** and  
recipient of the **UNESCO Prize for Peace Education**

Supported by  
**research and evidence**



## GOING BEYOND THE BEST

In starting a school, branding and image are initially important. However, what retains parents and moves a school from strength to strength is how good a school's education programme is, especially its academics, but also the joyfulness and the confidence it creates in every child. Global is, first and foremost, an outcomes-based and values-driven process of transformation of a school.

Global is driven by its mission to help create schools that make education more meaningful for the individual child

and the will to create conscious and caring individuals for whom service to humanity is a way of life. Global education creates both leaders and team players intrinsically motivated individuals who strive to do their best always, who are able to distinguish right from wrong and become worthy of human nobility. Students in Global Education maximize their potential in academics and in all that they undertake to do.

## COMPETE WITH YOURSELF!

The Global Programme is based on the Council for Global Education's Global Education Model of Schooling and its Four Essential Building Blocks of Education: Universal Values, Global Understanding, Excellence in All Things and Service to Humanity. Every child's excellence is brought out by centralising the principal of 'Compete with Yourself!'

“ THE BEST WAY TO SHAPE THE FUTURE IS TO NURTURE IT. ”

## GLOBAL FRANCHISE SCHOOLS

**NURTURE  
GLOBAL  
SCHOOL**



**NURTURE  
INTERNATIONAL  
SCHOOL**



**CITY  
INTERNATIONAL  
SCHOOL**



## THE RIGHT REASONS TO START A SCHOOL



- ✓ Bring about a positive difference in society.
- ✓ Enable individual transformation.
- ✓ Receive a high level of satisfaction through the service of children.
- ✓ Earn respect, appreciation and gratitude.
- ✓ Have a warm and caring environment to work in.
- ✓ Meet the ever increasing demand for schools of quality.
- ✓ Learn about education, the most complex issue of our times!
- ✓ Let income be a by-product of your outstanding work with the children.

## TRUE, BUT NOT THE BEST REASONS



## TO START A SCHOOL

- ✗ Recession free industry
- ✗ No dead stock / unsold inventory
- ✗ Cash flow, returns, etc.


**The greatest of all great services  
that is the education of children**

Baha'u'llah



**GLOBAL PROGRAMME INCLUDES**

FRANCHISE  
ACADEMIC TIE UP's  
MANAGEMENT / JV OPTIONS  
LARGE SCALE PROJECTS



## HOW IS GLOBAL DIFFERENT?

Started by educators

Shaped in real classrooms

Guided by vision

Grounded in research

Based on travel to and first-hand study of education in 38 countries

- Global provides its own K-12 content, study methods, diagnostic assessments, teacher training and supervision across all its schools.
- Global is a leader in educational thinking and India's first education house that provides standardisation in academics along with transparency, accountability and quality assurance that goes beyond branding and support.
- Global utilizes its family experience of establishing and running the world's largest K-12 school, a Guinness World Record Holder with over 47,000 students in the current session. The family-run City Montessori School also has the distinction of receiving the UNESCO Prize for Peace Education, the world's only school to have received this prestigious award.
- Global curriculum has been vetted by experts on four continents including educationists from Cambridge, Harvard, Oxford and Stanford Universities and Center for Innovation in Education, USA, among others. Experts from Argentina, the Czech Republic, Finland, Iceland, the Netherlands, Singapore, South Africa, UK and USA have provided valuable inputs.
- Global has involved more than 200 people from four continents in the development of Global's academic programme that has also been piloted in the UK, Iceland and the Czech Republic.
- Global approach to teaching / learning has further been substantiated with data and supported by research and evidence.



## THE SCHOOL EDUCATION MARKET

Education is an exciting sector at this time in India. There are very few players in the education field for a country as large as India. The field of education is so barren, there is a huge potential to make an impact. The vast majority of the Indian schools are set in traditional moulds. Though there are many schools getting into the reform agenda on their own, most struggle due to lack of expert vast and impact on student learning, motivation and confidence that parents and learning for support or clarity of direction. Clearly, with Global's new approach to teaching / learning, the potential to make an impact is manifold!

# WHY GLOBAL?

## GET WORLD CLASS EXPERTISE

Starting up a new school is not easy. Establishing a Global school is much easier as a Global expert team with family know-how of running the world's largest school will be behind you, supporting you every step of the way.

## AVOID COSTLY MISTAKES

Without expert support, starting up a school might even be more expensive as mistakes along the way may be costlier in terms of money spent, wrong decisions, or time lost.

## GET MORE STUDENTS

With Global, you will attract more students from the beginning. Even if you get a mere 100 students more on average per year in years 1 and 2, this is often enough to offset the initial licence fees.

## GAIN CONFIDENCE

Global Education is a vision-led school-based programme that provides World Class Curriculum complete with on-going diagnosis, teacher training and support to implement a 21st century education. It is the world's first education programme designed on the principle of 'Compete with Yourself' and focussed on personal excellence of every child.

## ESTABLISH FASTER

Most importantly, it takes time to build reputation of a new school, in the same time as Global will get you readymade students. Even if you plan to start many schools, you may take 10 years or longer to build a reputation big enough to be considered a brand, or you will need to spend enormously to establish a market presence. In the meantime, you could already be multiplying with Global. Though only recently started with franchise operations, Global is amongst the fastest growing education brands in India.

## GLOBAL VS. OTHER BRANDS

- In the next five years, the brand that will thrive the most will be a brand that will bring out the best in every child.
- Providing marginal improvements over existing systems are unlikely to be attractive to the increasingly more discriminating parents.
- Old education based on the ethics of compete with others is not able to bring out the best in every child. To bring out the best in every child, education needs to be based on the new and more powerful principle of "Compete with Yourself!" A comprehensive education must further be firmly founded upon Council for Global Education's Four Building Blocks of a New Education: Universal Values, Global Understanding, Excellence in all Things and Service to Humanity.

## ROYALTY IS DEFERRED OR WAIVED

Along with competitive fees, you will recover a large proportion of your up-front license fees just by the fact that you will get a waiver on royalties till you reach a certain student population, a guarantee offered by no other Brand. In this way and others, Global partners with you in your success.

## YOUR NAME IS A PART OF IT

If you have a desire to set up a school in a person or organisation's name, Global can be "in the memory of", "inspired by" or be "a project of" that person or organisation.

## THE RIGHT TIME IS NOW

There is opportunity cost to your timing. If it takes you a year longer to get your school started, for example, you are losing in terms of opportunity cost. The sooner you act, the better your school project will go because you can immediately start by putting the pieces together and profiling your school to get the word out.

## MEET THE GROWING EXPECTATIONS OF PARENTS

Away from comparison with others, parents want specific information on their own children and what will help them maximise their potential as individuals. The usual advice, "work hard", "practice" and "focus on weaknesses" is not effective.

Instead, Global provides frequent, on-going and detailed topic-wise personal strengths and areas of improvement. A child is thus prompted to improve upon and compete against his / her own performance. Further, every child is provided with personalised smart study plans that answer the question, "What next?" Personalised and differentiated learning materials help close and remaining gaps in understanding even as a child becomes a better at self-analysis, self-repulation and self-study.

Global's premise of "Compete with Yourself!" creates in every child the feeling, "Yes, I can." Such and intrinsic motivation is not easily possible to generate in systems that rely primarily upon competition with others.

Children progress like never before at the same time as parents become better informed partners in their child's learning.

Besides providing complete empowerment of the individual child, Global is a comprehensive programme of development of a school.



*"Look, I  
Can!"*

We need a metamorphosis in education.  
From the cocoon, a butterfly must emerge!



# STARTING A SCHOOL IS NOT EASY. IT IS EVEN MORE DIFFICULT TO SUSTAIN AND AUGMENT QUALITY YEAR AFTER YEAR.



## Marketing Support

- Guidelines for inauguration and launching of school
- Timely visits by our support staff
- Organizing seminars, business fairs and presentations
- Marketing communication
- Marketing Campaign (complete guidance on admission campaign strategy along with designs of all communication collaterals and event ideas)
- Assistance and support in framing effective marketing strategies and advertising plans as per inputs of your local area.
- Centralized designing of handbills, catalogues, visiting cards, letter heads, advertisements etc.

## Academic Support

- Our curriculum is internationally researched, well structured and updated on regular basis.
- Customized inquiry based books which are child centric and reduces work load
- Assistance in getting CBSE/ICSE/IB affiliation.
- Detailed assessment procedures for children and teachers
- Provide on-going support, guidelines, process manuals, school syllabus etc.
- Provide content and a start up website to reflect the school's mission and vision.
- Provide specification for academic offerings, curriculum for students, training of teachers in Global methods, activities, marketing, etc., leading up to making the region's best school
- Make strategies for student enrollment plan and facilities and specifications based on curriculum structure
- Fee structure, fee billing forms and procedures
- Admission tests / Class Readiness Surveys with Diagnostic Report.
- Provide teacher planners and support for on-going quality of implementation
- Installing of the assessment system, student assessment and performance reviews
- Creation and maintenance of school website



## Operational Support

- Contact person at the Global Classroom Head office for resolving queries.
- Approval and permissions (guidance)
- School operating procedures
- Continuous support by mails and visit to school for assessing strengths and weaknesses of the system.
- Introducing the vendors and suppliers (school uniforms, books etc)
- To act as knowledge advisor on the application process for the planning, developing application and managing of the accreditation process for CBSE, ICSE / IB Boards. The physical work for getting an NOC and other formalities and any payments to be made for getting the accreditation are to be borne by The Promoters.

## Recruitment Support

- Support and guidance in interviewing, recruiting and evaluating teaching staff, principal and PRO
- Guidance for number of teachers, salary structures and other staff requirements
- Training of Principal and teachers

## Infrastructure Support

- Site visit & layout plan
- Assistance in developing infrastructure and designing interiors
- Guidance on Interior Designing (for e.g wall, ceiling, furniture, floor, colour scheme, furniture/fixtures etc)
- Guidance on School Set-up Including Furniture, Outdoor & Indoor Equipment and Swimming Pool
- Guidance on selecting the site for the

## Training Support

- Providing all curriculum/training manuals
- Periodic training to academic team (100 hrs).
- Teacher training, creating a culture change from the beginning because teachers settle into patterns of behavior

School if required

- Infrastructure specification (for e.g. size of construction required from first year to commencement of the project)
- Setting up of language and mathematics labs
- Project report to help line up financing
- Architectural concepts, designs and services based on BALA (Building As a Learning Aid)

## Advertisement Support

- Local advertisement- layout, planning and conceptualization
- Nation-wide advertisements through newspapers, magazines & the electronic media
- Mention of the Franchisee's centre details on Global Classroom website and publishing of centre details in local advertisements Professionally prepared prospectus, brochures, newspaper advertisement, mailers, leaflets, banners, etc.
- Provide school logos, brochures, flyers, forms and hoarding designs, profiling the school in the best possible way
- Infrastructure specification (for e.g. size of construction required from first year to commencement of the project)
- Setting up of language and mathematics labs
- Project report to help line up financing
- Architectural concepts, designs and services based on BALA (Building As a Learning Aid)

## Other Support

- Competitive Strategy Development
- Above all, setting up a profitable organisation that provides quality education
- Helping you to sustain quality year after year through training of new and old teachers, continuous R&D and feedback from all stakeholders
- Supervision and Quality assurance
- Conducting parent orientation
- After School Programmes
- Setting up of language and mathematics labs
- Project report to help line up financing
- Architectural concepts, designs and services based on BALA (Building As a Learning Aid)

# LAND AREA REQUIREMENTS

## For K12 School

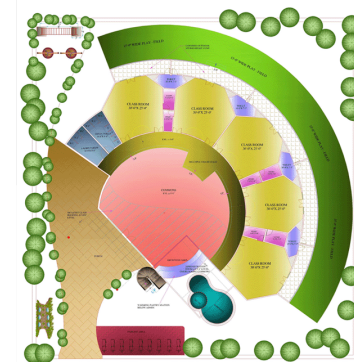
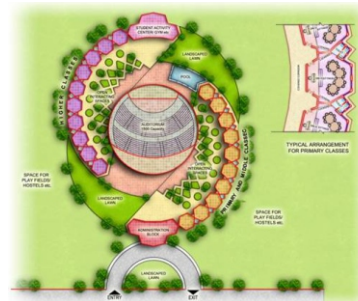
- In cities with a population exceeding 25 Lakhs, the land needs to be a minimum of 1 acre including adequate space for playgrounds and sports facilities.
- In all other places, the school must possess at least 2 acres of land with building and playground facilities.
- A larger parcel of land is always better as it provides many more opportunities for the children and a school's expansion including offer of residential facilities, staff quarters, etc.
- A world class residential school should have 20 some acres of land to allow for a vast range of facilities and for nature integration.
- When more land is available, a school may be built along with old people's homes. In this way not only some common facilities like swimming pool, common areas, gym, dining halls, cafeteria, etc., can be shared by the children and staff of the school, both children and the senior-people will benefit in a myriad ways in such a collaborative environment.

# COSTS OF INFRASTRUCTURE

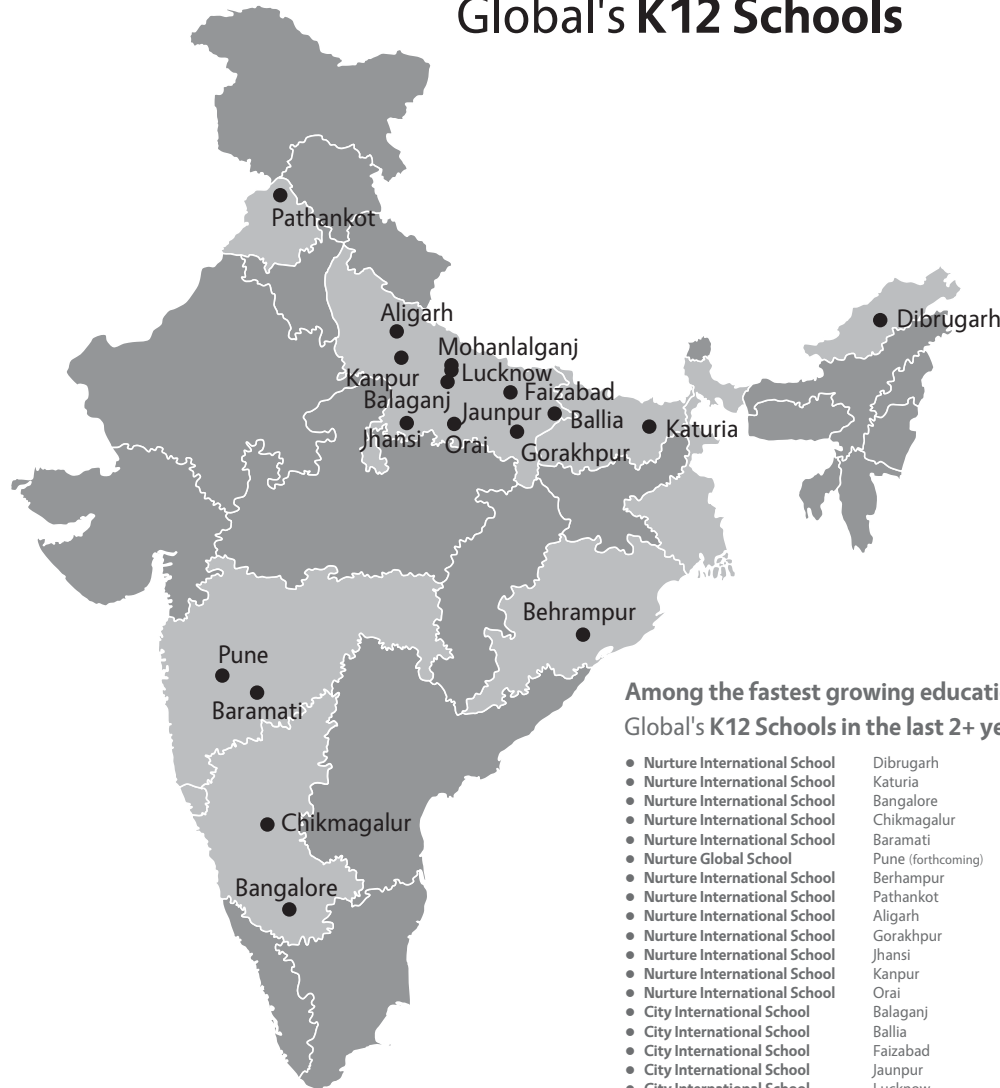
Construction costs vary from place to place and depend upon the quality of finish. On average, count on spending Rs 1000-1200 per sq. ft. including finishing with electrical, plumbing, bathrooms, flooring, etc.

# RETURN ON INVESTMENT

- It should be possible to reach break-even on on-going expenses in one year, and start to pay mortgage on construction in year 2 when a bank's moratorium period ends. As the cost of land has sky-rocketed in recent years, it is not possible to pay for land costs with a school's income in a short period of time. A school should, however, be debt free on its building within 5 to 7 years.
- A typical K12 school will have approximately 70,000-90,000 sq. ft. constructed area when completely built.
- Construction may be carried out in phases.
- Other costs of a school infrastructure such as furniture, labs, buses, playground and other equipment, etc., depend upon the number of classes, grades taught, and projected student population as are added to an emerging school each year.



## Global's K12 Schools



### Among the fastest growing education brands!

#### Global's K12 Schools in the last 2+ years

- Nurture International School Dibrugarh Assam
- Nurture International School Katuria Bihar
- Nurture International School Bangalore Karnataka
- Nurture International School Chikmagalur Karnataka
- Nurture International School Baramati Maharashtra
- Nurture Global School Pune (forthcoming) Maharashtra
- Nurture International School Berhampur Orissa
- Nurture International School Pathankot Punjab
- Nurture International School Aligarh Uttar Pradesh
- Nurture International School Gorakhpur Uttar Pradesh
- Nurture International School Jhansi Uttar Pradesh
- Nurture International School Kanpur Uttar Pradesh
- Nurture International School Orai Uttar Pradesh
- Nurture International School Balaganj Uttar Pradesh
- City International School Ballia Uttar Pradesh
- City International School Faizabad Uttar Pradesh
- City International School Jaunpur Uttar Pradesh
- City International School Lucknow Uttar Pradesh
- City International School Mohanlalganj Uttar Pradesh

(Several others are in the pipeline.)

## 10-STEPS TO YOUR SCHOOL START UP!

- 1 Fill up Area Survey Form.
- 2 Get site approved.
- 3 Sign agreement and complete formalities.
- 4 Get architect on board, if not built, or finalise changes to present building, if any.
- 5 Start construction or renovation as needed / interior decoration / playground.
- 6 Hire PRO and Principal. Order all furniture and equipment.
- 7 Set up a parent / child information room with multimedia and activities that showcase your school's pedagogy.
- 8 Hire staff and get them trained by Global trainers.
- 9 Launch press conferences and open days.
- 10 Inaugurate your new school!

“The journey of a thousand miles begins with a single step.” Adlai Stevenson

# So **What** is a **Good** Education?

**A good education is one that nurtures**

- ➔ a good human being,
- ➔ a good member of a family,
- ➔ a good member of a community; and,
- ➔ a good citizen of the world.

Universal Values

**Spirit to be**



**Heart to love**

Global Understanding



Excellence in All Things

**Mind to discover**



**Skills to do**

Service to Humanity



## GLOBAL'S FOUR BUILDING BLOCKS OF EDUCATION

The Council for Global Education USA / INDIA

[www.globaleducation.org](http://www.globaleducation.org)



## GOING BEYOND THE " BEST" WHEN THE BEST IS NOT ENOUGH

- Traditional study materials are made for a class assuming that the teachers will teach and the children will follow. In Global curriculum, children often learn by themselves. Teachers are facilitators.
- Children learn through application and discovery. Study materials are deductive and highly visual. Children find it easier to work with these materials than traditional textbooks.
- Research shows that if we double the thinking time, we double a child's performance.



- A year's coursework is divided into six parts called tiers. This makes the bag lighter. Children enjoy finishing each tierbook and look forward to the next.
- Each tierbook is aimed at mastery of topics inside. Children also cover more subject matter in an equivalent period of time compared with typical textbook / workbook / notebook combinations. This is because dividing a year's course work into parts better engages a child's psychology.

## GLOBAL INCLUDES:

- Curriculum for all subjects
- Study materials and solutions for all subjects
- Assessments for all subjects and solutions
- Comprehensive teacher training
- Supervision support

Thinking Skills, Discovery, Nature Integration, GK, Moral Education, SUPW, Arts, etc., are fully integrated in the thematic / inquiry based teaching of social studies and science



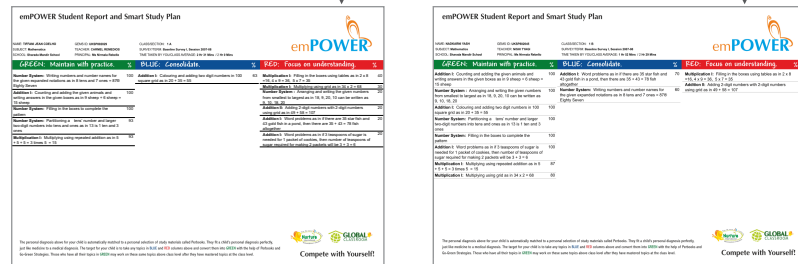
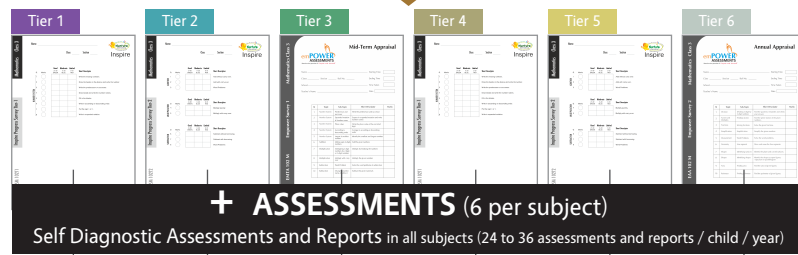
- At the end of each tier, there is a diagnostic test for self evaluation.
- The tierbooks are self-planners. Each tierbook has five units of work for five weeks, one unit for each week. Time serves as a guideline and perfection is the goal, not completion of syllabus at the cost of understanding. Each unit begins with teacher guidelines for kinesthetic, interactive and hands-on learning with emphasis on the active involvement of every child. For this, buckets and containers with sufficient quantities of materials are used (as shown).



- Tactile understanding is followed by work in "creative worksheets" that weave theory in visual and creative ways. They allow self-learning and discovery. The work within each unit is further broken up into short modules graded from easy to difficult. Further practice sessions focus on improvement of speed and accuracy. Even difficult subjects like mathematics and English grammar come alive for the individual child. Every child moves forward more effectively and more joyfully and feels more intrinsically motivated.

# A PROCESS OF TRANSFORMATION

Global is the only K-12 brand to provide complete academic solutions that allow high academic performance of every child and standardisation across its schools.



Global is not centered on study materials. Instead, its goal is school transformation. Global puts emphasis on a school's ethos, positive languages and processes:

1. Culture, ethos and positive languages are accompanied by study processes and methods that make learning joyful and accelerated. Data on each student's academic topic wise performance before and after a tier of work documents improvement and creates transparency for the child, parents and management.
2. Assessments and reporting lead to better self-concept and self-evaluation. Personalised reports not only inform but also inspire and empower every child with the feeling, "Yes, I can!" and create intrinsic motivation in every child.
3. Student centered, discovery based, scientifically designed and visual study materials encourage self study, goal setting, time management, self analysis and perfection of study objectives. Study materials, divided for each subject into six tiers of work also address the psychology of the child and the teacher. This makes learning easy and differentiated to address the individual child in whole classrooms for maximum success of every child in every class.

**Research & Evidence Based:** All methods and processes are research based and supported by evidence. Data on every child's progress provides transparency, accountability and credibility.


# IDEAS IN ACTION

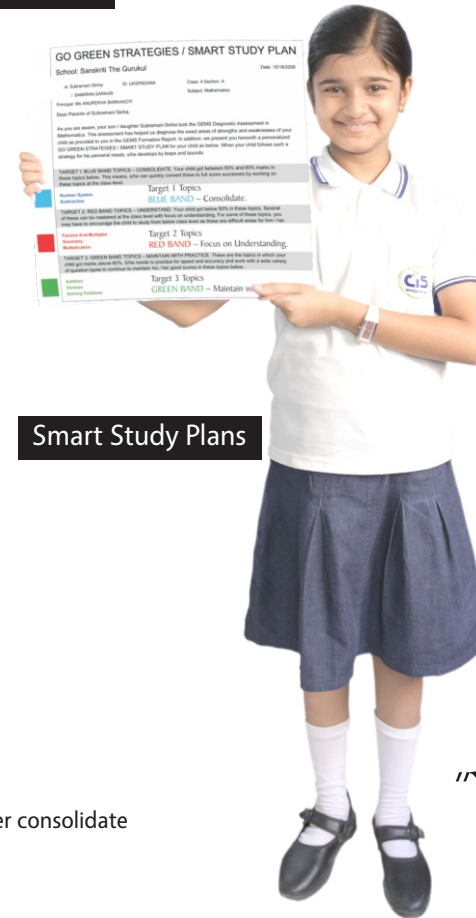
# MAINSTREAMING COMPETE WITH YOURSELF!

Every child gets a

- ✓ GLOBAL PERSONALISED DIAGNOSTIC REPORT and
- ✓ PROCESS OF PERFECTION GUIDELINES ALONG WITH A SMART STUDY PLAN and PERSONALISED STUDY MATERIALS

## GLOBAL PERSONALISED DIAGNOSTIC REPORT

GLOBAL PERSONALISED DIAGNOSTIC REPORT		Subject: ENGLISH	
<p>NAME: <b>Tushita Dugam</b> GEMS ID: <b>UKSP023495</b> CLASSSECTION: <b>4-A</b>                      SUBJECT: <b>English</b> TEACHER: <b>KABEEN CHOUDHURY</b> SURVEY/TERM: <b>Baseline Survey / Eng-2020 Class4</b>                      SCHOOL: <b>Sanskriti The Gurukul</b> PRINCIPAL: <b>Ms ANUREKHA BARKAKOTI</b> TIME TAKEN BY YOU/CLASS AVERAGE: <b>1 Hr 28 Mins / 1 Hr 20 Mins</b></p>			
<b>GREEN: Maintain with practice.</b> %	<b>BLUE: Consolidate.</b> %	<b>RED: Focus on understanding.</b> %	
<p><b>Verb:</b> Complete each sentence with correct form of the verb, for example, 'He was buying (buy) a newspaper from the corner shop.' 100</p> <p><b>Noun:</b> Unscramble the letters of the given words to get the correct name, for example, 'My pet dog had a litter of puppies.' (liefr) 90</p>	<p><b>Gender:</b> Rewrite the underlined words by changing the gender of the underlined nouns and pronouns, for example, 'My brother was chosen to act in the school concert.' - sister 70</p> <p><b>Simile:</b> Choose the correct word from the options and fill in the blanks, for example, 'Sonali is as hard working as an ant.' (warm / ant / fly) 70</p> <p><b>Pronoun:</b> Choose the correct pronoun and fill in the blanks, for example, 'This dog belongs to Mr and Mrs Gupta. This dog is theirs.' (their / theirs / they) 60</p> <p><b>Picture Composition:</b> Study the picture and write a story or a description of the picture. 60</p> <p><b>Sentence:</b> Choose the correct sentence given and fill in the blanks. 60</p> <p><b>Pronoun:</b> Two sentences are given, each pair is joined using a relative pronoun, choose the correct sentence. 60</p> <p><b>Editing:</b> Correct the underlined grammatical mistakes in each sentence, for example, 'A zoo is a place were where we can see wild animals.' 50</p> <p><b>Adjective:</b> Choose the correct word and fill in the blanks, for example, 'There is some juice in the jug.' (some / any / many) 50</p>	<p><b>Comprehension:</b> Read the passage and answer the questions that follow. 40</p> <p><b>Composition:</b> Write a composition of at least fifteen to twenty sentences on any one of the given topics, for example, 'My School Uniform' / 'An Exciting Adventure' / 'A Visit to a Market'. 40</p> <p><b>Noun:</b> The underlined word in each sentence is incorrect. Write the correct word in the space provided, for example, 'Mona, my friend was known for her honest.' 20</p>	
 <p>The personal diagnosis for your child above is automatically matched up with formative study materials called <b>TopicBOOKS / Perbooks</b> that fit your child's personal needs, like medicine to a diagnosis. The target for your child is to take any personal <b>Blue</b> and <b>Red</b> topics above and convert them to <b>Green</b> with the help of <b>Perbooks</b> and other resources. Those who have all their topics in <b>Green</b> may work on some case study topics above class level (see your child's <b>SMART STUDY PLAN</b> separately provided).</p>		<p>GEMS: The Global Education Model of Schooling has been developed in India since 2009 by Dr Sunita Gandhi, Ph.D., Cambridge University, UK, who upholds the view that by providing information to the GEMS way (above), target setting and formative measures, students become more effective partners in their learning process. Every child excels and shines like a GEM! For more information, please contact The Global Classroom, <a href="mailto:info@globalclassroom.in">info@globalclassroom.in</a> or call 9522 654 9044 or +91 92 355 046 7475.</p>	



Smart Study Plans



Personalised Study Materials

## A PROCESS OF PERFECTION

- GREEN** means GOOD — Concepts a child is **Good** in and needs to maintain with practice
- BLUE** means MODERATELY GOOD — Concepts a child is **Moderately Good** in and needs to further consolidate
- RED** means LIMITED — Concepts a child is **Limited** in and needs to focus on better understanding

"Yes, I Can!"

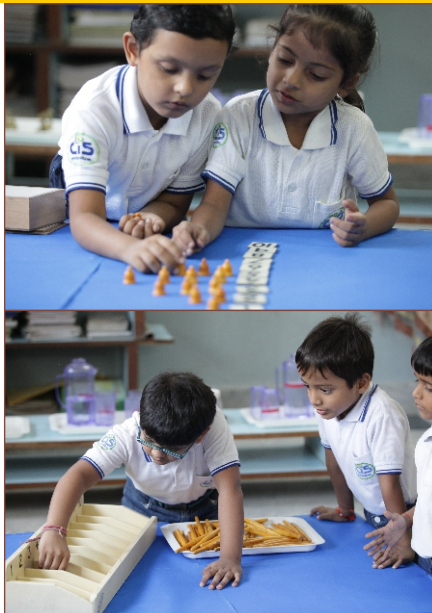
Children deserve nothing less...

## IS IT POSSIBLE?

- EVERY CHILD**
- is better inspired
  - learns better
  - gains in confidence
  - becomes more creative
  - develops better thinking skills
  - better understands personal strengths and areas of improvement
  - becomes a better partner in his / her learning, can learn by self, is more intrinsically motivated
  - becomes more caring, respectful and responsible
  - focuses on beauty and perfection
  - progresses in many more ways than in the past...

## THE OUTCOMES FROM GLOBAL EDUCATION

- Develops an intrinsic love for learning / builds motivation from within
- Promotes discovery
- Encourages competition with oneself
- Inculcates life skills and instills values
- Nurtures cooperation and team spirit
- Inspires leadership skills
- Prepares for the unknown
- Develops global citizenship
- Preserves self confidence and nurtures confidence



	CONVENTIONAL EDUCATION	GLOBAL EDUCATION
TEXTBOOKS	<ul style="list-style-type: none"> <li>○ Syllabus focused</li> <li>○ Same for all</li> <li>○ Limited in graded learning</li> </ul>	<ul style="list-style-type: none"> <li>○ Learning focussed</li> <li>○ Customised for the individual child</li> <li>○ Highly graded learning</li> </ul>
TEACHING	<ul style="list-style-type: none"> <li>○ Focus on syllabus coverage</li> <li>○ Little on-going check on class assimilation</li> <li>○ Limited individual attention</li> </ul>	<ul style="list-style-type: none"> <li>○ Focus on understanding and perfection</li> <li>○ Measures on-going class assimilation</li> <li>○ Focused individual attention</li> </ul>
ASSESSMENTS	<ul style="list-style-type: none"> <li>○ Selective Q A based class competition</li> <li>○ Periodic and marks focused</li> </ul>	<ul style="list-style-type: none"> <li>○ Assessments lead to self diagnosis</li> <li>○ Continuous and learning focused, propels a student forward</li> </ul>
INVOLVEMENT	<ul style="list-style-type: none"> <li>○ Primarily through parent-teacher meetings</li> <li>○ Limited individual attention</li> </ul>	<ul style="list-style-type: none"> <li>○ On-going teacher-parent-school involvement</li> <li>○ Continuous feedback</li> <li>○ Personalised attention to each child</li> </ul>





## EXCELLENCE IN ALL THINGS

The hallmark of a Global school is that it has one curriculum that has been prepared according to Global's vision, "Compete with Yourself!"



Global study methods integrate kinesthetic, tactile, visual and scientific methods. Classroom strategies involve every child in hands-on interactive learning. These methods help children discover the facts by themselves and understand better. World class assessments help students self-assess progress, plan and study smarter. Every child learns more and shows greater progress than in the past.

*Children deserve nothing less...*





Training in Hands-on Mathematics by Global Trainer Bob-Baratta Lorton

## TEACHER TRAINING THAT INSPIRES AND EMPOWERS

BRINGING HOME TOP NATIONAL &  
INTERNATIONAL EXPERTISE...

### School Environment / Ethos

- Vision setting
- Creative and thinking classrooms
- Making values real
- Accelerated and advanced methods of learning
- Personalised and differentiated teaching
- Use of languages that heal, encourage and positively reinforce
- Positive school ethos, soft side
- Leadership by example
- Teacher, a facilitator

### Assessments

- Assessments that inspire and empower
- Reporting and report cards based on the premise of 'Compete with Yourself!
- Self analysis and evaluation
- On-going diagnostics
- Creative worksheets and homework

### Pedagogies

- Montessori and Waldorf methods / Reggio Emilia
- Inquiry based learning
- Constructivism
- Use of Multiple Intelligences
- Bloom's Taxonomy
- Accelerated and advanced methods of learning
- Personalised and differentiated teaching





### Methods

- Hands-on mathematics
- Phonics
- Interactive English
- Science experiments
- Role plays and mini acts
- Music and movement
- Cooperative Games

### Settings

- Dream classrooms
- Multi-age settings
- Classroom organisation
- Seating arrangements
- Team work settings

and more...

No school can exceed the quality of its teachers. We have to train our teachers in a systematic manner in which the end results, the assessments, the study materials, the methods and the processes are all part of an integral whole and training addresses them as a whole for greatest impact. Piece-meal approaches to training are often less effective.

## CREATING SCHOOLS OF THE FUTURE...

## AN EXPERIENCED INTERNATIONAL TEAM

- Global's education has been developed with the help of over 200 educators from across the globe.
- The programme has been perfected since 2000 with a multi-year trial in three countries: Iceland, UK and India and pilots elsewhere.

## INTERNATIONAL SAGES AND ADVISORS

- |                                     |                                |                                 |
|-------------------------------------|--------------------------------|---------------------------------|
| ○ André Roberfroid, The Netherlands | ○ Deryn Harvey, UK             | ○ Mikko Korhonen, Finland       |
| ○ Andy Harvey, UK                   | ○ Geeta Gandhi Kingdon, UK     | ○ Mindy Blaise, Hong Kong       |
| ○ Anneke Tolsma, The Netherlands    | ○ Hanna Ragnarsdottir, Iceland | ○ Oscar Marin, Argentina        |
| ○ Aurelia Garcia, Argentina         | ○ Helena Thuneberg, Finland    | ○ Pirjo Koivula, Finland        |
| ○ Bill Huitt, Germany               | ○ Howard Gardner, USA          | ○ Robert J Saunders, USA        |
| ○ Bob Baratta-Lorton, USA           | ○ Indu Eisenberg, Germany      | ○ Steinunn Gudnadottir, Iceland |
| ○ Dave Faulkner, Australia          | ○ Lynne Lawrence, USA          | ○ Stella Fernandez, Singapore   |
| ○ Dee Loftus, UK                    | ○ Matthew Rich, South Africa   | ○                               |
|                                     | ○ Maxine Swensson, Australia   |                                 |



Dr Sunita Gandhi was invited as the Keynote in April 2013 to Finland's Annual Conference on Education organised by the Finnish National Board of Education, Finland. Finland produces the world's best academic results as per well-known TIMSS & PISA international assessments and comparisons.

Compete with self, not others: Sunita Gandhi

NAGPUR: Many people only talk about changing the education system, but **only a few like Sunita Gandhi have successfully experimented to implement changes in the system.** The existing education system in India stresses more on competition with others, but she staunchly believes that the key to potential development is competition with oneself.

While addressing the principals' conference at Vanamati on Friday, she spoke at length with her experiences and experimentation in the school education field. The senior education adviser of City Montessori School in Lucknow, which holds a Guinness world record for highest pupil strength of 47,000 and 5,000 staff members, was in the city to inaugurate third Principal Educational Conference (PEC). Chairman of Desh Gaurav Social and Educational Society Dinanath Dasture and convener Mrinalini Dasture shared the dais. Based on Sunita's visits to more than 35 countries for experiencing their education system, she has established Nurture International Welfare Society, a programme based on four building blocks of education:

universal values, global understanding, excellence in all things and service to humanity.

'Sing your own song- a thought beyond curriculum,' Sunita said in the existing system creativity of children is suppressed by spoon-feeding them. She said, "Spoon-feeding with information is 19th century's idea of imparting education to meet the needs of industries, to find skilled, intelligent workforce to drive industrial revolution. This system is outdated today, but still it is widely practised all over the world, even India." **According to her, a broader and bolder education is the need of 21st century which should embrace creative and innovative work from children.**

The schools generally focus on what syllabus must be covered, but the chief guest suggested that **giving impetus to outcome for which education is imparted is more important.** "Outcome like developing good character and performing good work must be preferred than budding talent of smart work," she said.

“**A Research-Based Approach to Educational Transformation**”



# GLOBAL IN THE MEDIA



### THE HITAVADA

#### 'Let us lead Alice out of her wonderland'

12-CityLINE

14th March, Saturday, January 7, 2011

Education should be like a schoolhouse: Dr Gandhi



Dr. Sunita Gandhi, Founder of Global Education, is seen speaking at a podium during a conference. She is wearing a blue and white patterned sari. The background shows a stage with a banner and other people seated at a table.

### NAGPUR TODAY

#### शिक्षकांनी अभ्यासक्रमाचा चौकीबाहेर जाऊन शिकवावे

डॉ. सुनीता गांधी : राष्ट्रीय प्राचार्य शिक्षण परिषदेचे यादात उद्घाटन: आज्ञा समारोह



Dr. Sunita Gandhi is speaking at a podium during a conference. She is wearing a blue and white patterned sari. The background shows a stage with a banner and other people seated at a table.

### GOOD MORNING NAGPUR

#### विद्यार्थ्यांनी आवडीचे शिक्षण घ्यावे - डॉ. गांधी

प्रयागराज शैक्षणिक परिषदेचा शुभारंभ



Dr. Sunita Gandhi is speaking at a podium during a conference. She is wearing a blue and white patterned sari. The background shows a stage with a banner and other people seated at a table.

### DAINIK BHASKAR

#### किताबी ज्ञान को सरल बनाएं : डॉ. गांधी

राष्ट्रीय प्राचार्य शिक्षण परिषद में पहुंचे डॉ. सुनीता गांधी



Dr. Sunita Gandhi is speaking at a podium during a conference. She is wearing a blue and white patterned sari. The background shows a stage with a banner and other people seated at a table.

### NAVBHARAT

#### बच्चों को बनाए 'गुड' और 'स्मार्ट'

2 शैक्षणिक सम्मेलन शिक्षण परिषद-प्रधानी



Dr. Sunita Gandhi is speaking at a podium during a conference. She is wearing a blue and white patterned sari. The background shows a stage with a banner and other people seated at a table.

### TIMES OF INDIA

#### Watch

#### MAKING A GEM OF EACH CHILD



A group of children are sitting at a table in a classroom, engaged in an activity. They are wearing colorful clothing. The background shows a classroom setting with a whiteboard and other furniture.

### THE HITAVADA

#### 'सिंग युवर ओन साँग'

डॉ. सुनीता गांधी यांचे मुलतान आवरण



Dr. Sunita Gandhi is speaking at a podium during a conference. She is wearing a blue and white patterned sari. The background shows a stage with a banner and other people seated at a table.

### LOKMAT TIMES

#### Broader, bolder education need of 21st century: Sunita



Dr. Sunita Gandhi is speaking at a podium during a conference. She is wearing a blue and white patterned sari. The background shows a stage with a banner and other people seated at a table.

### INDIAN EXPRESS

#### LET'S MAKE EVERY CHILD A 'GEM'

themselves, bringing into account John Holt's 'How Children Fail', preparing the children to work with the unknown and to learn to think by themselves. Children love these short 16-page workbooks on education and policy makers anyone involved in education. However, in the interim years when she worked with conferences and events to try to raise profile on these issues, she felt mostly talking to the already converted, or to policy makers who paid lip service to these issues. This led her to create the Global Education Model of Schooling, with its mission to take every child a GEM! This is also when she decided to learn a lesson from the pages of history and instead focus her attention on creating a new model of schooling, which is an example of this framework. 20 years ago, she started CIS - City International School (www.cityinternational.org)



Dr. Sunita Gandhi is speaking at a podium during a conference. She is wearing a blue and white patterned sari. The background shows a stage with a banner and other people seated at a table.

### HINDUSTAN TIMES

#### A local global school

ENTER the world of City International School that thinks globally and acts as per local needs



A group of children are sitting at a table in a classroom, engaged in an activity. They are wearing colorful clothing. The background shows a classroom setting with a whiteboard and other furniture.

### THE TIMES OF INDIA

#### STUDENT EDITION

#### CIS: bringing international education to Lucknow



A group of children are sitting at a table in a classroom, engaged in an activity. They are wearing colorful clothing. The background shows a classroom setting with a whiteboard and other furniture.

### Re-Imagine@ School: Scope for Change

In the changing world around us, concepts relating to the education of children are also changing. School choice is emerging. And, school choice is about nothing other than assuring excellence in education.



Dr. Sunita Gandhi is speaking at a podium during a conference. She is wearing a blue and white patterned sari. The background shows a stage with a banner and other people seated at a table.

Children deserve nothing less...

Are we instilling in our children a love for existence, the preciousness of life, and the fundamental recognition that we are part of one, single human race, part of one global ethos? Do we help our children examine the deeper aspects of life, watch the night sky,

Are we instilling in our children a love for existence, the preciousness of life, and the fundamental recognition that we are part of one, single human race, part of one global ethos? Do we help our children examine the deeper aspects of life, watch the night sky,

Are we instilling in our children a love for existence, the preciousness of life, and the fundamental recognition that we are part of one, single human race, part of one global ethos? Do we help our children examine the deeper aspects of life, watch the night sky,



# ABOUT THE FOUNDER



**Dr Sunita Gandhi**  
PhD, Cambridge University, UK  
President, Council for  
Global Education, USA  
Convenor, EdWW and  
Ed Leadership, India

Sunita Gandhi has travelled to and studied education systems in 38 countries and engaged in innovative work in education worldwide. She has founded and run schools in India, the Czech Republic and Iceland. These schools and others on three continents have served as laboratory for her to test ideas of an education more suited to the needs and aspirations of children living in the 21st century. In Iceland, India and the UK, she has piloted personalized and differentiated methods and assessments that aim to inspire and empower every child. Her work based on the principle of 'compete with yourself' has had an appeal to educators worldwide. Her school partnership programmes for new and existing schools aim at school transformation.

She has founded and run the Council for Global Education in Washington, DC, USA, the Education Society of Iceland, Islensku menntasamtökin ses, Iceland, and the Nurture International Welfare Society, India, to promote a new vision of education. Her latest project, the Global Classroom Pvt. Ltd. in India is to speed-up a process of reform at schools and help create a demonstration value in the new education based on the principle of 'Compete with yourself'. These efforts have been supported by her vision and passion for an education that brings out the best in every child for both personal and social good. They are further supported by research and evidence. She has established DEVI - Dignity, Education, Vision International, a non-profit NGO and started her first school for the underprivileged at the age of 14. Her experience in education is unique and spans a vast range, from the bottom-up grassroots level and practices in everyday classrooms, to worldwide top-down education policy reform.

Dr Sunita Gandhi has a PhD in Physics from Cambridge University, UK, and a Bachelors in Physics from Imperial College, London University. At Cambridge, she received three merit based scholarships: The Cambridge Commonwealth Trust Scholarship, The Overseas Student Award and Trinity College Scholarship. Subsequently, Sunita Gandhi was selected to the Young Professionals Programme at the World Bank, Washington, DC, USA. There she worked on education policy and development for nearly 10 years. Sunita Gandhi grew up to a family of educators that have founded and run the world's largest school, in Lucknow, India, with over 47,000 students currently on roll. It holds a Guinness World Record for being the world's largest school and is the world's sole school recipient of the UNESCO Prize for Peace Education.

**PEOPLE**

**Pedigree educationist**

**L**UCKNOW-BASED EDUCATIONIST DR. Sunita Gandhi is a woman of many parts and more ambitions. Currently, she is the founder-principal of City International School (est. 2007) of the City Montessori Schools (CMS) group, Lucknow; founder of DEVI (Dignity, Education, Vision International), a not-for-profit NGO promoted in 1992 to provide primary education to children; and designer of the GEMS (Global Education Model of Schooling) system of education which offers contemporary internationally-oriented pedagogy. Born in Lucknow into the family of celebrated educationists, Dr. Jagdish and Bharti Gandhi, founders of the CMS group, (with an enrolment of 32,114 students CMS is acknowledged by Guinness World Records as the largest school worldwide), Gandhi graduated from Imperial College,



Sunita Gandhi: family tradition focus

London and pressed on with academics to be awarded a Ph D by the blue-chip Cambridge University. In 1989 she was signed up by World Bank (WB) as a consultant 'young professional' and economist. Young professionals is a competitively earned highly prized designation offering fast-track career growth within the bank. "After being

inducted into the young professionals programme, I immediately focused on education development projects as per the family tradition," she reminisces. In 1994 Gandhi achieved her first major breakthrough in education when she played a major role in the promotion of the Global Concepts International School in Prague for the Czech government. In 1998 after quitting the World Bank (she ran into persistent health problems following trips to Kenya and Uganda) she helped launch Iceland's first two charter schools — Aslandskóli, an elementary school up to grade VII and Tjarnars, a pre-school, both in the city of Hafnarfjörður. After returning to India in 2004 to help out with the administration of the 20



The Times of India



Mentor Magazine for Principals



Dr Jagdish and Dr Mrs Bharti Gandhi, Founders, City Montessori School (CMS), Lucknow, receiving the UNESCO Prize for Peace Education at the UNESCO Headquarters in Paris, 2002.



Dr Sunita Gandhi on extreme right with family at the UNESCO Headquarters in Paris, at the Awards Ceremony.



Education experts from across the world were invited by Dr Gandhi to Iceland in 2003 to discuss Global Education based on the principle of compete with yourself. Above, Dr Howard Gardener, founder of Multiple Intelligences movement in education and Dr Ellen Winner, Psychology Professor, are giving their inputs on the Global Programme in Reykjavik, Iceland.



Principals and teachers are acknowledged and appreciated for their innovative work. Here, Dr Robert Saunders and Dr Sunita Gandhi, Co-Founders of the Council for Global Education, USA, present awards and recognition to teachers and Principals in Iceland.



In India, recognition is provided at the nationwide level through Education We Want Initiative ([www.educationwewant.org](http://www.educationwewant.org)) and Ed Leadership Roundtables ([www.edleader.in](http://www.edleader.in)). To date, some 250 individuals from schools across India have been honoured with the Ed Leader Innovation In-Process Fellowships, Ed Innovator and other Awards.



[www.guinnessworldrecords.com](http://www.guinnessworldrecords.com)



[www.unesco.org](http://www.unesco.org)



[www.globaleducation.org](http://www.globaleducation.org)



[www.educationwewant.org](http://www.educationwewant.org)

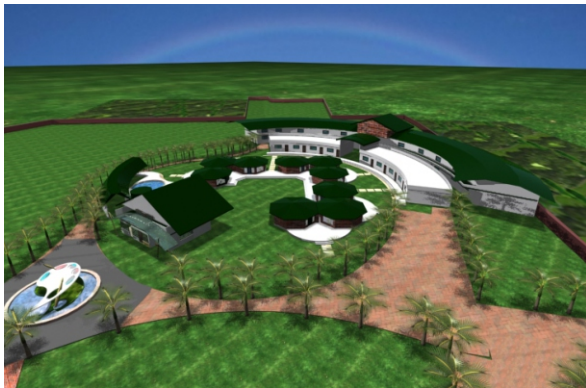


[www.edleader.in](http://www.edleader.in)



## BENEFITS OF A GLOBAL FRANCHISE

- **Established Brand:** Global is based on 38-country experience and family know-how of running the world's largest school, a Guinness World Record Holder and recipient UNESCO Prize for Peace Education.
- **Proven Record:** Global has some 20 franchise schools across India in just over 2 years.
- **Research-Based Organisation:** Global is a unique curriculum based on evidence and a schooling system developed on the basis of 54 years of experience in the education sector, and pilots in the UK, the Czech Republic and Iceland, among others.
- **A Gratifying Experience:** You will feel very gratified when children, parents and the society will appreciate your honest efforts in the service of children.



**RURAL**

Mohanlalganj, UP

"Global programme is based on thought that every child is special. By this programme, we can help the students who are weak in studies. With the help of Tierbooks, classroom becomes child oriented by which children develop the habit of self learning. It is in the nurture of the students that they become happy when they get new books. Global's Nurture Programme make students happy for six times because the whole syllabus is divided into six tiers."

Omkar Nath, Founder,  
City International School,  
Mohanlalganj



**SEMI-URBAN**

Pathankot, Punjab

"Global has been providing the right set of teaching material that has details on a daily planning mode that could be tracked with a target date and monitored effectively. This helps in retaining the confidence level of the teacher and parents with a focused target. Is pecifically liked the children of mixed ages learning together that helps the children learn from their seniors as a child learns from another child more easily. The activities like the field work and others add value to the teaching that you impart and they are aligned to the lessons that are currently being taught, this is a good aspect as the child practically sees what is being taught."

Raman Bhalla, Founder,  
Nurture International School  
Pathankot



**URBAN**

Aligarh, UP

"The most unique way of nurturing children is via activities. It has helped children to develop interest in learning and interacting more. Each tier itself is a teacher. The help boxes and the notes given underneath explain the topic better. The exercises have just to be completed by filling answers which is far better than copying from the board as it saves a lot of time. No topic is left untouched be it a life cycle of a butterfly or a structure of an animal cell or a human eye or any other. A child may not have an encyclopedic knowledge on all topics but is even not ignorant of them."

Ashok Kulshrestha, Founder,  
Nurture International School,  
Aligarh



Inviting you to join hands with  
**GLOBAL'S EDUCATION FOR LIFE,**  
since children deserve nothing less...



A Future's Education, Today!

### GLOBAL VISION

Global's vision is to create a better world through a new education more suited to the needs of the 21st century, an education founded upon Council for Global Education's four building blocks of education: Universal Values, Global Understanding, Excellence in All Things and Service to Humanity.

### GLOBAL MISSION

Global's mission is to influence policy, create demonstration value and support the empowerment of schools in order to bring out the best and highest in each child and to help every child become a caring, conscious and contributing world citizen.

### GLOBAL GOAL

Global's goal is to help schools implement a global education and put into practice it's mission to inspire every child to become both good and smart through new and advanced processes, methods, materials, training and support based on the principle of 'Compete with Yourself'.





We need a metamorphosis in education.

From a caterpillar, a butterfly must emerge!

**GLOBAL CLASSROOM PVT. LTD.**  
10 G Station Road, Lucknow, UP, India

9235 6200 13 / 14 / 15  
[www.globalclassroom.in](http://www.globalclassroom.in)

SMS: **GLOBAL to 58888**  
Email: [info@globalclassroom.in](mailto:info@globalclassroom.in)